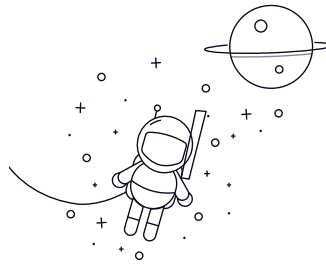
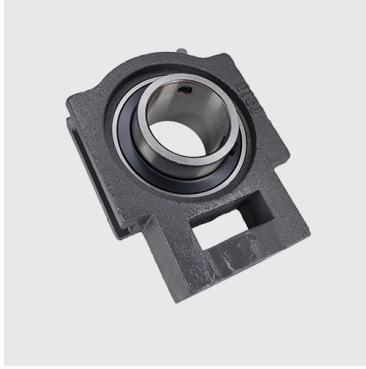


SSUCT200 Series



Designation	d Shaft diameter		Dimensions(mm)														
	(in)	(mm)	N1	L2	H2	N2	N	L3	A1	H1	H	L	A	A2	L1	B	s
SSUCT204		20	16	10	51	32	19	51	12	76	94	32	21	61	31	12.7	0.79
SSUCT204-12	3/4	20	16	10	51	32	19	51	12	76	94	32	21	61	31	12.7	0.79
SSUCT205		25	16	10	51	32	19	51	12	76	97	32	24	62	34.1	14.3	0.84
SSUCT205-14	7/8	25	16	10	51	32	19	51	12	76	97	32	24	62	34.1	14.3	0.84
SSUCT205-15	15/16	25	16	10	51	32	19	51	12	76	97	32	24	62	34.1	14.3	0.84
SSUCT205-16	1	25	16	10	51	32	19	51	12	76	97	32	24	62	34.1	14.3	0.84
SSUCT206		30	16	10	56	37	22	57	12	89	113	37	28	70	38.1	15.9	1.32
SSUCT206-17	1-1/16	30	16	10	56	37	22	57	12	89	113	37	28	70	38.1	15.9	1.32
SSUCT206-18	1-1/8	30	16	10	56	37	22	57	12	89	113	37	28	70	38.1	15.9	1.32
SSUCT206-19	1-3/16	30	16	10	56	37	22	57	12	89	113	37	28	70	38.1	15.9	1.32
SSUCT206-20	1-1/4	30	16	10	56	37	22	57	12	89	113	37	28	70	38.1	15.9	1.32
SSUCT207		35	16	13	64	37	22	64	12	89	129	37	30	78	42.9	17.5	1.72
SSUCT207-20	1-1/4	35	16	13	64	37	22	64	12	89	129	37	30	78	42.9	17.5	1.72
SSUCT207-21	1-5/16	35	16	13	64	37	22	64	12	89	129	37	30	78	42.9	17.5	1.72
SSUCT207-22	1-3/8	35	16	13	64	37	22	64	12	89	129	37	30	78	42.9	17.5	1.72
SSUCT207-23	1-7/16	35	16	13	64	37	22	64	12	89	129	37	30	78	42.9	17.5	1.72
SSUCT208		40	19	16	83	49	29	83	16	102	144	49	33	88	49.2	19	2.52
SSUCT208-24	1-1/2	40	19	16	83	49	29	83	16	102	144	49	33	88	49.2	19	2.52
SSUCT208-25	1-9/16	40	19	16	83	49	29	83	16	102	144	49	33	88	49.2	19	2.52
SSUCT209		45	19	16	83	49	29	83	16	102	144	49	35	87	49.2	19	2.52
SSUCT209-26	1-5/8	45	19	16	83	49	29	83	16	102	144	49	35	87	49.2	19	2.52
SSUCT209-27	1-11/16	45	19	16	83	49	29	83	16	102	144	49	35	87	49.2	19	2.52
SSUCT209-28	1-3/4	45	19	16	83	49	29	83	16	102	144	49	35	87	49.2	19	2.52
SSUCT210		50	19	16	83	49	29	86	16	102	149	49	37	90	51.6	19	2.69
SSUCT210-30	1-7/8	50	19	16	83	49	29	86	16	102	149	49	37	90	51.6	19	2.69
SSUCT210-31	1-15/16	50	19	16	83	49	29	86	16	102	149	49	37	90	51.6	19	2.69

SSUCT200 Series

SSUCT210-32	2	50	19	16	83	49	29	86	16	102	149	49	37	90	51.6	19	2.69
SSUCT211		55	25	19	102	64	35	95	22	130	171	64	38	106	55.6	22.2	4.04
SSUCT211-32	2	55	25	19	102	64	35	95	22	130	171	64	38	106	55.6	22.2	4.04
SSUCT211-34	2-1/8	55	25	19	102	64	35	95	22	130	171	64	38	106	55.6	22.2	4.04
SSUCT211-35	2-3/16	55	25	19	102	64	35	95	22	130	171	64	38	106	55.6	22.2	4.04
SSUCT212		60	32	19	102	64	35	102	22	130	194	64	42	119	65.1	25.4	5
SSUCT212-36	2-1/4	60	32	19	102	64	35	102	22	130	194	64	42	119	65.1	25.4	5
SSUCT212-38	2-3/8	60	32	19	102	64	35	102	22	130	194	64	42	119	65.1	25.4	5
SSUCT212-39	2-7/16	60	32	19	102	64	35	102	22	130	194	64	42	119	65.1	25.4	5