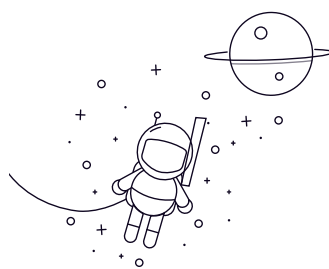


SSUCFL Series



Designation	d Shaft diameter		Dimensions(mm)										Weight (kg)
	(in)	(mm)	H	J	A2	A1	A	N	L	z	B	S	
SSUCFL204 A		20	113	90	15	11	27	12	60	33.3	12.7	M10	0.5
SSUCFL204-12 A	3/4	20	113	90	15	11	27	12	60	33.3	12.7	M10	0.5
SSUCFL205 A		25	130	99	16	13	28	12.5	68	35.8	14.3	M14	0.71
SSUCFL205-14 A	7/8	25	130	99	16	13	28	12.5	68	35.8	14.3	M14	0.71
SSUCFL205-15 A	15/16	25	130	99	16	13	28	12.5	68	35.8	14.3	M14	0.71
SSUCFL205-16 A	1	25	130	99	16	13	28	12.5	68	35.8	14.3	M14	0.71
SSUCFL206 A		30	148	117	18	13	31	12.5	79	40.2	15.9	M14	1.04
SSUCFL206-17 A	1-1/16	30	148	117	18	13	31	12.5	79	40.2	15.9	M14	1.04
SSUCFL206-18 A	1-1/8	30	148	117	18	13	31	12.5	79	40.2	15.9	M14	1.04
SSUCFL206-19 A	1-3/16	30	148	117	18	13	31	12.5	79	40.2	15.9	M14	1.04
SSUCFL206-20 A	1-1/4	30	148	117	18	13	31	12.5	79	40.2	15.9	M14	1.04
SSUCFL207 A		35	161	130	19	14	34	14	90	44.4	17.5	M14	1.38
SSUCFL207-20 A	1-1/4	35	161	130	19	14	34	14	90	44.4	17.5	M14	1.38
SSUCFL207-21 A	1-5/16	35	161	130	19	14	34	14	90	44.4	17.5	M14	1.38
SSUCFL207-22 A	1-3/8	35	161	130	19	14	34	14	90	44.4	17.5	M14	1.38
SSUCFL207-23 A	1-7/16	35	161	130	19	14	34	14	90	44.4	17.5	M14	1.38
SSUCFL208 A		40	175	144	21	15	36	14	100	51.2	19	M14	1.73

SSUCFL Series

SSUCFL208-24 A	1-1/2	40	175	144	21	15	36	14	100	51.2	19	M14	1.73
SSUCFL208-25 A	1-9/16	40	175	144	21	15	36	14	100	51.2	19	M14	1.73
SSUCFL209 A		45	187	148	22	16	38	16	108	52.2	19	M16	2.07
SSUCFL209-26 A	1-5/8	45	187	148	22	16	38	16	108	52.2	19	M16	2.07
SSUCFL209-27 A	1-11/16	45	187	148	22	16	38	16	108	52.2	19	M16	2.07
SSUCFL209-28 A	1-3/4	45	187	148	22	16	38	16	108	52.2	19	M16	2.07
SSUCFL210 A		50	195	157	22	16	40	16	115	54.6	19	M16	2.47
SSUCFL210-30 A	1-7/8	50	195	157	22	16	40	16	115	54.6	19	M16	2.47
SSUCFL210-31 A	1-15/16	50	195	157	22	16	40	16	115	54.6	19	M16	2.47
SSUCFL210-32 A	2	50	195	157	22	16	40	16	115	54.6	19	M16	2.47
SSUCFL204 EHB		20	113	90	15	11.5	27	10.5	60	33.3	12.7	M8	0.5
SSUCFL204-12 EHB	3/4	20	113	90	15	11.5	27	10.5	60	33.3	12.7	M8	0.5
SSUCFL205 EHB		25	130	99	16	13	28	12.5	68	35.8	14.3	M10	0.69
SSUCFL205-14 EHB	7/8	25	130	99	16	13	28	12.5	68	35.8	14.3	M10	0.69
SSUCFL205-15 EHB	15/16	25	130	99	16	13	28	12.5	68	35.8	14.3	M10	0.69
SSUCFL205-16 EHB	1	25	130	99	16	13	28	12.5	68	35.8	14.3	M10	0.69
SSUCFL206 EHB		30	148	117	18	13	31	12.5	79	40.2	15.9	M10	0.99
SSUCFL206-17 EHB	1-1/16	30	148	117	18	13	31	12.5	79	40.2	15.9	M10	0.99
SSUCFL206-18 EHB	1-1/8	30	148	117	18	13	31	12.5	79	40.2	15.9	M10	0.99
SSUCFL206-19 EHB	1-3/16	30	148	117	18	13	31	12.5	79	40.2	15.9	M10	0.99

SSUCFL Series

SSUCFL206-20 EHB	1-1/4	30	148	117	18	13	31	12.5	79	40.2	15.9	M10	0.99
SSUCFL207 EHB		35	161	130	19	14.3	34	14	90	44.4	17.5	M12	1.37
SSUCFL207-20 EHB	1-1/4	35	161	130	19	14.3	34	14	90	44.4	17.5	M12	1.37
SSUCFL207-21 EHB	1-5/16	35	161	130	19	14.3	34	14	90	44.4	17.5	M12	1.37
SSUCFL207-22 EHB	1-3/8	35	161	130	19	14.3	34	14	90	44.4	17.5	M12	1.37
SSUCFL207-23 EHB	1-7/16	35	161	130	19	14.3	34	14	90	44.4	17.5	M12	1.37
SSUCFL208 EHB		40	171	144	21	14.3	36	14	100	51.2	19	M12	1.65
SSUCFL208-24 EHB	1-1/2	40	171	144	21	14.3	36	14	100	51.2	19	M12	1.65
SSUCFL208-25 EHB	1-9/16	40	171	144	21	14.3	36	14	100	51.2	19	M12	1.65
SSUCFL209 EHB		45	179	148	22	15	38	16	108	52.2	19	M14	2.36
SSUCFL209-26 EHB	1-5/8	45	179	148	22	15	38	16	108	52.2	19	M14	2.36
SSUCFL209-27 EHB	1-11/16	45	179	148	22	15	38	16	108	52.2	19	M14	2.36
SSUCFL209-28 EHB	1-3/4	45	179	148	22	15	38	16	108	52.2	19	M14	2.36
SSUCFL210 EHB		50	195	157	22	15	40	16	115	54.6	19	M14	2.51
SSUCFL210-30 EHB	1-7/8	50	195	157	22	15	40	16	115	54.6	19	M14	2.51
SSUCFL210-31 EHB	1-15/16	50	195	157	22	15	40	16	115	54.6	19	M14	2.51
SSUCFL210-32 EHB	2	50	195	157	22	15	40	16	115	54.6	19	M14	2.51
SSUCFL211 EHB		55	224	184	25	18	43	19	130	58.4	22.2	M16	3.61
SSUCFL211-32 EHB	2	55	224	184	25	18	43	19	130	58.4	22.2	M16	3.61
SSUCFL211-33 EHB	2-1/8	55	224	184	25	18	43	19	130	58.4	22.2	M16	3.61

SSUCFL Series

SSUCFL211-34 EHB	2-3/16	55	224	184	25	18	43	19	130	58.4	22.2	M16	3.61
SSUCFL212 EHB		60	250	202	29	18	48	23	140	68.7	25.4	M16	4.19
SSUCFL212-36 EHB	2-1/4	60	250	202	29	18	48	23	140	68.7	25.4	M16	4.19
SSUCFL212-38 EHB	2-3/8	60	250	202	29	18	48	23	140	68.7	25.4	M16	4.19
SSUCFL212-39 EHB	2-7/16	60	250	202	29	18	48	23	140	68.7	25.4	M16	4.19
SSUCFL204 ESB		20	113	90	15	11.5	27	10.5	60	33.3	12.7	M8	0.5
SSUCFL204-12 ESB	3/4	20	113	90	15	11.5	27	10.5	60	33.3	12.7	M8	0.5
SSUCFL205 ESB		25	130	99	16	13	28	12.5	68	35.8	14.3	M10	0.69
SSUCFL205-14 ESB	7/8	25	130	99	16	13	28	12.5	68	35.8	14.3	M10	0.69
SSUCFL205-15 ESB	15/16	25	130	99	16	13	28	12.5	68	35.8	14.3	M10	0.69
SSUCFL205-16 ESB	1	25	130	99	16	13	28	12.5	68	35.8	14.3	M10	0.69
SSUCFL206 ESB		30	148	117	18	13	31	12.5	79	40.2	15.9	M10	0.99
SSUCFL206-17 ESB	1-1/16	30	148	117	18	13	31	12.5	79	40.2	15.9	M10	0.99
SSUCFL206-18 ESB	1-1/8	30	148	117	18	13	31	12.5	79	40.2	15.9	M10	0.99
SSUCFL206-19 ESB	1-3/16	30	148	117	18	13	31	12.5	79	40.2	15.9	M10	0.99
SSUCFL206-20 ESB	1-1/4	30	148	117	18	13	31	12.5	79	40.2	15.9	M10	0.99
SSUCFL207 ESB		35	161	130	19	14.3	34	14	90	44.4	17.5	M12	1.37
SSUCFL207-20 ESB	1-1/4	35	161	130	19	14.3	34	14	90	44.4	17.5	M12	1.37
SSUCFL207-21 ESB	1-5/16	35	161	130	19	14.3	34	14	90	44.4	17.5	M12	1.37
SSUCFL207-22 ESB	1-3/8	35	161	130	19	14.3	34	14	90	44.4	17.5	M12	1.37

SSUCFL Series

SSUCFL207-23 ESB	1-7/16	35	161	130	19	14.3	34	14	90	44.4	17.5	M12	1.37
SSUCFL208 ESB		40	171	144	21	14.3	36	14	100	51.2	19	M12	1.65
SSUCFL208-24 ESB	1-1/2	40	171	144	21	14.3	36	14	100	51.2	19	M12	1.65
SSUCFL208-25 ESB	1-9/16	40	171	144	21	14.3	36	14	100	51.2	19	M12	1.65
SSUCFL209 ESB		45	179	148	22	15	38	16	108	52.2	19	M14	2.36
SSUCFL209-26 ESB	1-5/8	45	179	148	22	15	38	16	108	52.2	19	M14	2.36
SSUCFL209-27 ESB	1-11/16	45	179	148	22	15	38	16	108	52.2	19	M14	2.36
SSUCFL209-28 ESB	1-3/4	45	179	148	22	15	38	16	108	52.2	19	M14	2.36
SSUCFL210 ESB		50	195	157	22	15	40	16	115	54.6	19	M14	2.51
SSUCFL210-30 ESB	1-7/8	50	195	157	22	15	40	16	115	54.6	19	M14	2.51
SSUCFL210-31 ESB	1-15/16	50	195	157	22	15	40	16	115	54.6	19	M14	2.51
SSUCFL210-32 ESB	2	50	195	157	22	15	40	16	115	54.6	19	M14	2.51
SSUCFL211 ESB		55	224	184	25	18	43	19	130	58.4	22.2	M16	3.61
SSUCFL211-32 ESB	2	55	224	184	25	18	43	19	130	58.4	22.2	M16	3.61
SSUCFL211-34 ESB	2-1/8	55	224	184	25	18	43	19	130	58.4	22.2	M16	3.61
SSUCFL211-35 ESB	2-3/16	55	224	184	25	18	43	19	130	58.4	22.2	M16	3.61
SSUCFL212 ESB		60	250	202	29	18	48	23	140	68.7	25.4	M16	4.19
SSUCFL212-36 ESB	2-1/4	60	250	202	29	18	48	23	140	68.7	25.4	M16	4.19
SSUCFL212-38 ESB	2-3/8	60	250	202	29	18	48	23	140	68.7	25.4	M16	4.19
SSUCFL212-39 ESB	2-7/16	60	250	202	29	18	48	23	140	68.7	25.4	M16	4.19

SSUCFL Series

SSUCFL204 YHB		20	113	90	15	10	27	12	60	33.3	12.7	M10	0.45
SSUCFL204-12 YHB	3/4	20	113	90	15	10	27	12	60	33.3	12.7	M10	0.45
SSUCFL205 YHB		25	130	99	16	10	28	16	68	35.8	14.3	M14	0.59
SSUCFL205-14 YHB	7/8	25	130	99	16	10	28	16	68	35.8	14.3	M14	0.59
SSUCFL205-15 YHB	15/16	25	130	99	16	10	28	16	68	35.8	14.3	M14	0.59
SSUCFL205-16 YHB	1	25	130	99	16	10	28	16	68	35.8	14.3	M14	0.59
SSUCFL206 YHB		30	148	117	18	10	31	16	79	40.2	15.9	M14	0.91
SSUCFL206-17 YHB	1-1/16	30	148	117	18	10	31	16	79	40.2	15.9	M14	0.91
SSUCFL206-18 YHB	1-1/8	30	148	117	18	10	31	16	79	40.2	15.9	M14	0.91
SSUCFL206-19 YHB	1-3/16	30	148	117	18	10	31	16	79	40.2	15.9	M14	0.91
SSUCFL206-20 YHB	1-1/4	30	148	117	18	10	31	16	79	40.2	15.9	M14	0.91
SSUCFL207 YHB		35	161	130	19	11	34	16	90	44.4	17.5	M14	1.21
SSUCFL207-20 YHB	1-1/4	35	161	130	19	11	34	16	90	44.4	17.5	M14	1.21
SSUCFL207-21 YHB	1-5/16	35	161	130	19	11	34	16	90	44.4	17.5	M14	1.21
SSUCFL207-22 YHB	1-3/8	35	161	130	19	11	34	16	90	44.4	17.5	M14	1.21
SSUCFL207-23 YHB	1-7/16	35	161	130	19	11	34	16	90	44.4	17.5	M14	1.21
SSUCFL208 YHB		40	175	144	21	15	36	16	100	51.2	19	M14	1.67
SSUCFL208-24 YHB	1-1/2	40	175	144	21	15	36	16	100	51.2	19	M14	1.67
SSUCFL208-25 YHB	1-9/16	40	175	144	21	15	36	16	100	51.2	19	M14	1.67
SSUCFL209 YHB		45	187	148	22	16	38	19	108	52.2	19	M16	2.21

SSUCFL Series

SSUCFL209-26 YHB	1-5/8	45	187	148	22	16	38	19	108	52.2	19	M16	2.21
SSUCFL209-27 YHB	1-11/16	45	187	148	22	16	38	19	108	52.2	19	M16	2.21
SSUCFL209-28 YHB	1-3/4	45	187	148	22	16	38	19	108	52.2	19	M16	2.21
SSUCFL210 YHB		50	195	157	22	16	40	19	115	54.6	19	M16	2.32
SSUCFL210-30 YHB	1-7/8	50	195	157	22	16	40	19	115	54.6	19	M16	2.32
SSUCFL210-31 YHB	1-15/16	50	195	157	22	16	40	19	115	54.6	19	M16	2.32
SSUCFL210-32 YHB	2	50	195	157	22	16	40	19	115	54.6	19	M16	2.32
SSUCFL211 YHB		55	224	184	25	16	43	19	130	58.4	22.2	M16	3.18
SSUCFL211-32 YHB	2	55	224	184	25	16	43	19	130	58.4	22.2	M16	3.18
SSUCFL211-34 YHB	2-1/8	55	224	184	25	16	43	19	130	58.4	22.2	M16	3.18
SSUCFL211-35 YHB	2-3/16	55	224	184	25	16	43	19	130	58.4	22.2	M16	3.18
SSUCFL212 YHB		60	250	202	29	16	48	19	140	68.7	25.4	M16	4.19
SSUCFL212-36 YHB	2-1/4	60	250	202	29	16	48	19	140	68.7	25.4	M16	4.19
SSUCFL212-38 YHB	2-3/8	60	250	202	29	16	48	19	140	68.7	25.4	M16	4.19
SSUCFL212-39 YHB	2-7/16	60	250	202	29	16	48	19	140	68.7	25.4	M16	4.19