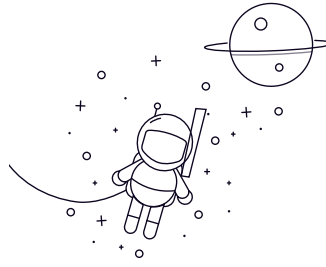


SSUCFC200 Series



Designation	d Shaft diameter		Dimensions(mm)											Weight (kg)	
	(in)	(mm)	D2	P	J	A2	N	L	H1	A1	D1	B	s		z
SSUCFC204		20	100	78	55.1	10	12	5	7	20.5	31	12.7	28.3	M10	0.77
SSUCFC204-12	3/4	20	100	78	55.1	10	12	5	7	20.5	31	12.7	28.3	M10	0.77
SSUCFC205		25	115	90	63.6	10	12	6	7	21	34.1	14.3	29.7	M10	1.13
SSUCFC205-14	7/8	25	115	90	63.6	10	12	6	7	21	34.1	14.3	29.7	M10	1.13
SSUCFC205-15	15/16	25	115	90	63.6	10	12	6	7	21	34.1	14.3	29.7	M10	1.13
SSUCFC205-16	1	25	115	90	63.6	10	12	6	7	21	34.1	14.3	29.7	M10	1.13
SSUCFC206		30	125	100	70.7	10	12	8	8	23	38.1	15.9	32.2	M10	1.47
SSUCFC206-17	1-1/16	30	125	100	70.7	10	12	8	8	23	38.1	15.9	32.2	M10	1.47
SSUCFC206-18	1-1/8	30	125	100	70.7	10	12	8	8	23	38.1	15.9	32.2	M10	1.47
SSUCFC206-19	1-3/16	30	125	100	70.7	10	12	8	8	23	38.1	15.9	32.2	M10	1.47
SSUCFC206-20	1-1/4	30	125	100	70.7	10	12	8	8	23	38.1	15.9	32.2	M10	1.47
SSUCFC207		35	135	110	77.8	11	14	8	9	26	42.9	17.5	36.4	M12	1.86
SSUCFC207-20	1-1/4	35	135	110	77.8	11	14	8	9	26	42.9	17.5	36.4	M12	1.86
SSUCFC207-21	1-5/16	35	135	110	77.8	11	14	8	9	26	42.9	17.5	36.4	M12	1.86
SSUCFC207-22	1-3/8	35	135	110	77.8	11	14	8	9	26	42.9	17.5	36.4	M12	1.86
SSUCFC207-23	1-7/16	35	135	110	77.8	11	14	8	9	26	42.9	17.5	36.4	M12	1.86
SSUCFC208		40	145	120	84.8	11	14	10	9	26	49.2	19	41.2	M12	2.17
SSUCFC208-24	1-1/2	40	145	120	84.8	11	14	10	9	26	49.2	19	41.2	M12	2.17
SSUCFC208-25	1-9/16	40	145	120	84.8	11	14	10	9	26	49.2	19	41.2	M12	2.17
SSUCFC209		45	160	132	93.3	10	16	12	10	26	49.2	19	40.2	M14	2.5
SSUCFC209-26	1-5/8	45	160	132	93.3	10	16	12	10	26	49.2	19	40.2	M14	2.5
SSUCFC209-27	1-11/16	45	160	132	93.3	10	16	12	10	26	49.2	19	40.2	M14	2.5
SSUCFC209-28	1-3/4	45	160	132	93.3	10	16	12	10	26	49.2	19	40.2	M14	2.5
SSUCFC210		50	165	138	97.6	10	16	12	14	28	51.6	19	42.6	M14	2.95
SSUCFC210-30	1-7/8	50	165	138	97.6	10	16	12	14	28	51.6	19	42.6	M14	2.95

SSUCFC200 Series

SSUCFC210-31	1-15/16	50	165	138	97.6	10	16	12	14	28	51.6	19	42.6	M14	2.95
SSUCFC210-32	2	50	165	138	97.6	10	16	12	14	28	51.6	19	42.6	M14	2.95
SSUCFC211		55	185	150	106.1	13	19	12	13	30	55.6	22.2	46.4	M16	4
SSUCFC211-32	2	55	185	150	106.1	13	19	12	13	30	55.6	22.2	46.4	M16	4
SSUCFC211-34	2-1/8	55	185	150	106.1	13	19	12	13	30	55.6	22.2	46.4	M16	4
SSUCFC211-35	2-3/16	55	185	150	106.1	13	19	12	13	30	55.6	22.2	46.4	M16	4
SSUCFC212		60	195	160	113.1	17	19	12	15	35	65.1	25.4	56.7	M16	4.9
SSUCFC212-36	2-1/4	60	195	160	113.1	17	19	12	15	35	65.1	25.4	56.7	M16	4.9
SSUCFC212-38	2-3/8	60	195	160	113.1	17	19	12	15	35	65.1	25.4	56.7	M16	4.9
SSUCFC212-39	2-7/16	60	195	160	113.1	17	19	12	15	35	65.1	25.4	56.7	M16	4.9